



**COLLABORATION,  
COOPERATION, AND THE  
FUTURE OF COMMUNITIES**

[www.13ways.ca](http://www.13ways.ca)

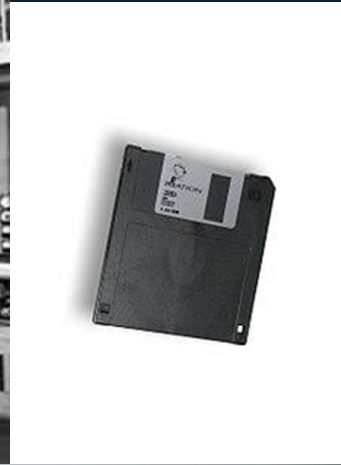
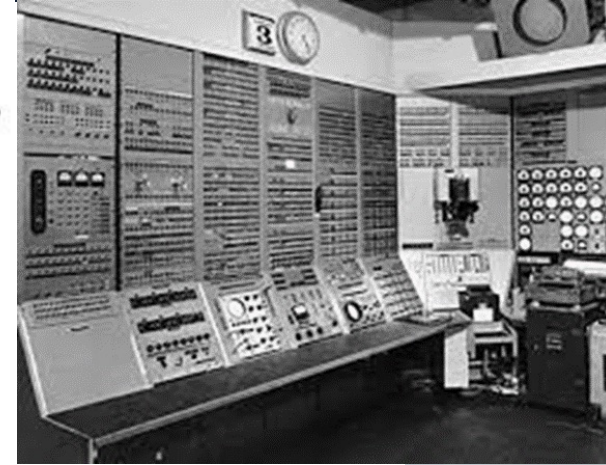
MOM

# Times . . . They Are A-Changing



13WAYS  
There's Always A Way

## Yesterday and Today



[www.13ways.ca](http://www.13ways.ca)

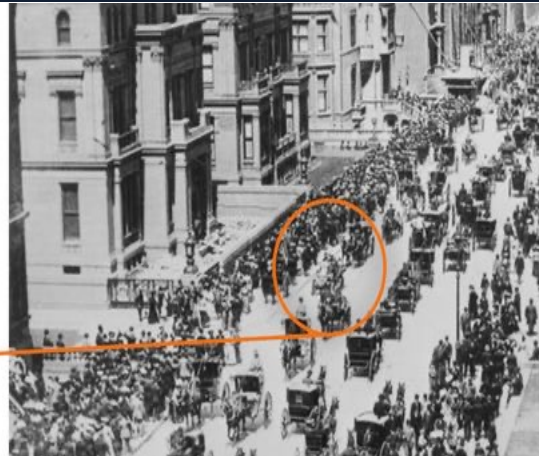


# Yesterday and Today



5<sup>th</sup> AVE NYC  
1900

Where is  
the  
car?



5<sup>th</sup> AVE NYC  
1913

Where is  
the  
horse?



# The Rate of Change ... is Changing

Law	Moore's	Kryder's	Hendy's	Butter's	Nielson's	Rose's
Technology	Circuit Transistors	Data Storage	Digital Imaging	Optical Fiber Transmission	Home Network Speed	Quantum Computing
Months to Double	24	13	24	9	21	12

# The Rate of Change ... is Changing

\$1,000 - double every 24 months ...

\$32,000

\$1,024,000

\$32,768,000

Every 12 months ...

\$1,024,000

\$1,046,576,000 (billion!)

\$1,073,741,824,000 (trillion!)





13WAYS  
There's Always A Way

# Changing Communities



[www.13ways.ca](http://www.13ways.ca)



13WAYS  
There's Always A Way

## Changing Values



# Generational Values



During WWII, many rural women went to work in military plants like the Comhuiver Ordnance Plant in Grand Island, Ne. Source NARA.





13WAYS  
There's Always A Way

# The Good Old Days . . . Or Were They?





# Achieving Failure – Ego and Independence

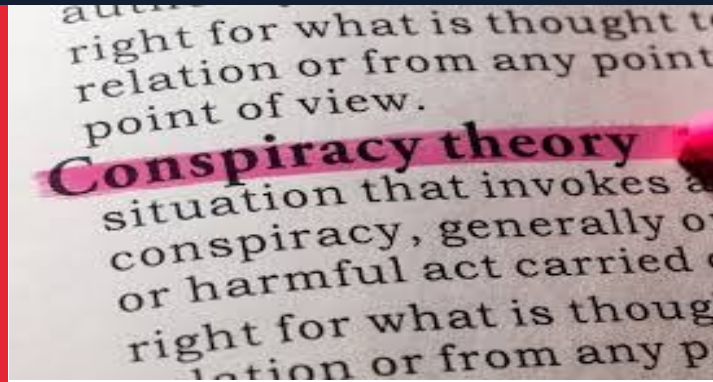




## 120-Year-Old Lines In The Sand



## The Mindset



*Autonomy*



VANISHED



13WAYS  
There's Always A Way

## The Basics



Embrace what makes you  
UNIQUE



WHO?





13WAYS  
There's Always A Way

Stronger Together



**PALMERSTON**  
RAILWAY HERITAGE MUSEUM



**minto**  
Communities

- 1. Cooperation and Collaboration**
- 2. Quality of Life**
- 3. Housing and Workforce**
- 4. Infrastructure**
- 5. Taxes**

## Coopetition - Growing the Pie

Three distinctive  
courses









**Not All Collaborators are Leaders**

**But all Leaders are Collaborators.**





# There's Always A Way . . . . To Succeed

Website: **[www.13ways.ca](http://www.13ways.ca)**

Phone: **1.587.573.1313**

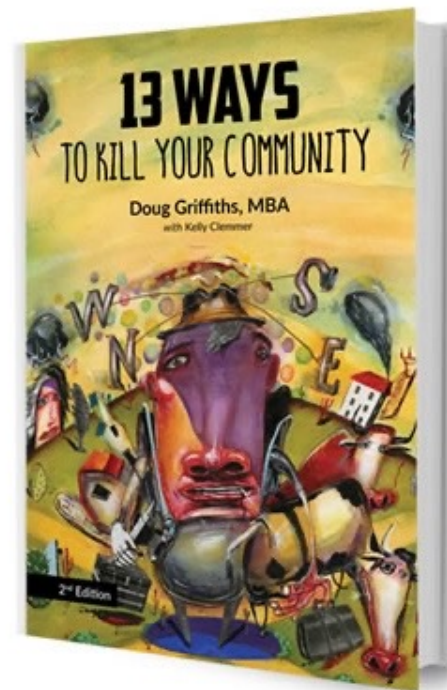
Email: **[info@13ways.ca](mailto:info@13ways.ca)**

LinkedIn: Griff13Ways

Facebook: 13WaysInc

Instagram: 13ways.community

Twitter: @Doug13Ways





## Anti-Change Cultures Die



**REI**

**xerox™**



## The Reasons Against – The Public



Taxes



Services



Savings



Debt



Governance





13WAYS  
There's Always A Way

# Youth and Young Professionals





13WAYS  
There's Always A Way

# It's a Capital, but is it Edmonton?



## Creating a Region by Design

15 Edmonton Metropolitan Region Board



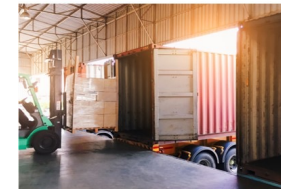
15 Edmonton Metropolitan Region Board

In the next 25 to 30 years, we're on track to welcome another million people and add another 470,000 jobs.



We identify opportunities, build on our strengths, and continue moving forward together, to foster smart growth.

15 Edmonton Metropolitan Region Board



## Creating a Region by Design

15 Edmonton Metropolitan Region Board

